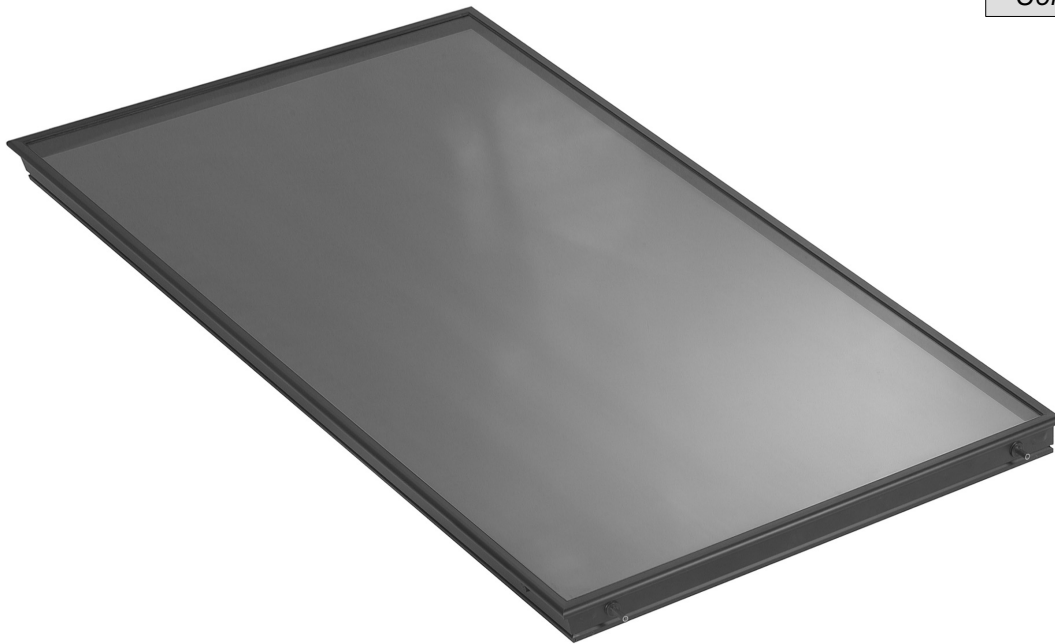


Compact line



**Art. No.:** 221 894  
**Description:** SchücoSol K

#### Flat-plate collectors

Size (L x W x D):	2037 x 1137 x 80 mm
Collector surface:	2.32 m <sup>2</sup>
Weight:	44.0 kg
Efficiency:	$\eta_0 = 79.9 \%$
Coefficient of heat loss:	$k_1 = 3.97 \text{ W/m}^2\text{K}$
	$k_2 = 0.016 \text{ W/m}^2\text{K}^2$
Angle of radiation correction factor:	$k_{(50)} = 0.95$
Thermal output:	1.7 kW

#### Absorber

Emission:	$\varepsilon = 5.0 \%$
Absorption:	$\alpha = 95.0 \%$
Absorber surface:	2.15 m <sup>2</sup>
Aperture surface:	2.14 m <sup>2</sup>
Material:	Copper
Coating:	Sunselect

#### Hydraulics

Heat transfer volume:	1.54 l
Minimum volume flow: (up to max. 5 collectors in series)	2.50 l/min
Pressure loss (2.5 l/min solar fluid):	97.4 mbar
Connection:	12.0 mm Cu pipe
Type of connector:	Clamping ring
Operating pressure:	3.2 bar
Permissible operating excess pressure:	10 bar
Test pressure:	20 bar
Standstill temperature:	209 °C
Permissible flow temperature:	120 °C

#### Front cover

Solar glazing:	Low-iron, high transparency
Transmittance:	> 91.0 %
Thickness:	4.0 mm

#### Housing

Material:	Aluminium Black (Anodised black; like RAL 9011, graphite black)
Gaskets:	EPDM/silicone
Thermal insulation:	40 mm mineral wool

### SchücoSol K

The **SchücoSol K** high-performance flat-plate solar collector converts solar energy into heat. It can be used to generate hot water in the home (e.g. central heating) and to heat swimming pools. The high quality Sunselect absorber coating and optimised thermal insulation keep energy losses to a minimum. The heat is transferred to the storage cylinder by means of frost-protected, non-toxic solar fluid.

This solar collector was developed with maximum longevity and ease of assembly in mind, together with high performance. "AluminiumBlack" is the standard finish for **SchücoSol K**. Piping: meander, 2 connectors on short collector side.

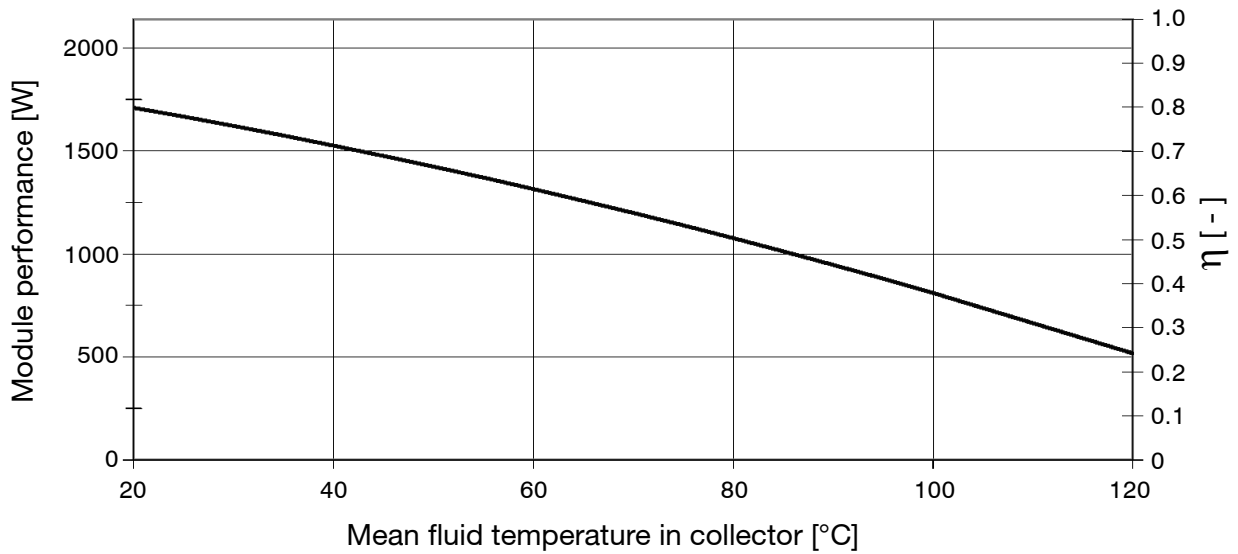
### Quality features, certificates

- High level of efficiency due to Sunselect coating on the absorber
- Low energy loss thanks to excellent thermal insulation
- Suitable for roof-mounted, integrated roof and flat-roof assembly  
Installation: Adjacent to one another (portrait), above each other (landscape) and two collectors one above the other (portrait)
- Robust aluminium frame for maximum durability
- Highly reliable with long useful life due to the use of high quality, corrosion-resistant materials
- High-transparency glass covering
- Easy to assemble, installation using special mounting systems, collector-connector-kits or collector connector and installation accessories
- Compact size
- Blue Angel
- CE mark
- EC guidelines 97/23/EC (pressure device guidelines)
- Test in accordance with DIN EN 12975-2 (ISFH)



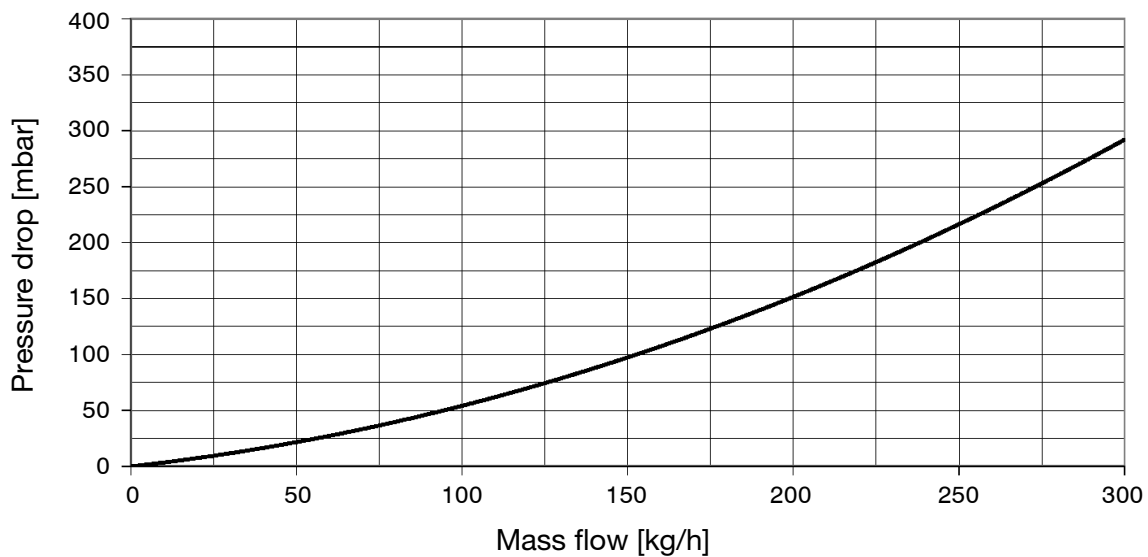
### Performance characteristics

(irradiation= 1000 W/m<sup>2</sup>, air temperature = 20 °C)

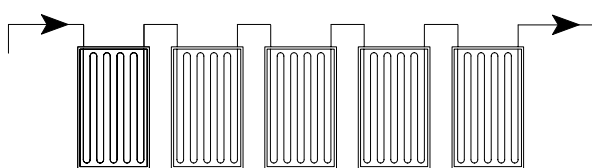


### Pressure drop characteristic curve

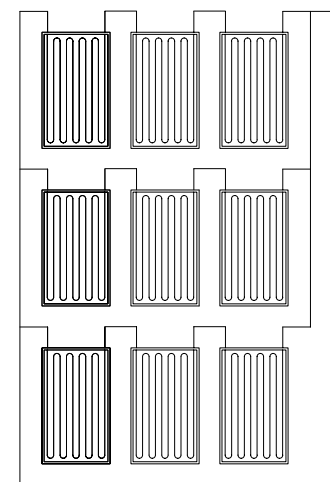
(temperature of solar fluid = 20 °C)



### Connection methods



In series  
(max. 5 collectors in series)



In parallel  
(Tichelmann method)